

ROUND ABOUT

Worksheet - XI

Name: Class: Roll No:

A. Science of plant life is known as Botany. It began with early human efforts. Given below are the meanings of some of the botany terms. Write the words below their meanings.



A plant which has moderate water requirements –

YPMSOHTEE

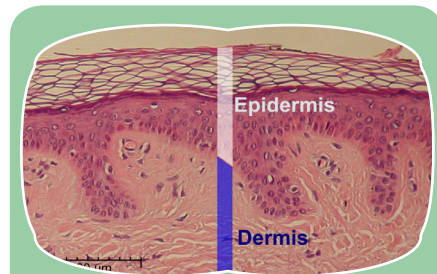
.....



The rich, organic portion of the soil that is composed of decayed plant and animal materials –

MUUSH

.....



The outer protective layer of a plant that helps prevent injury and minimizes water loss by evaporation –

DEIERISPM

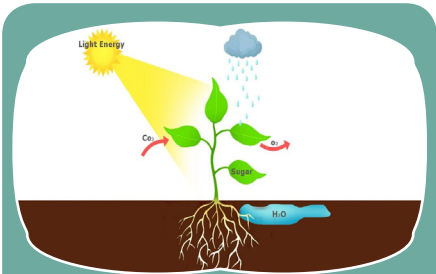
.....



Concentric circles which appear on tree trunk cross-sections that mark the end of a growing season, thereby showing how the tree grew in a particular year –

NALNUA GRIN

.....



An organism capable of making its own food substances from light energy, and producing organic material from CO₂ as a raw material –

SERTOPHXYE

.....



A root that is not highly branched and majorly adapted for food storage –

PTTAROO

.....



A plant adapted to growth and survival in a dry environment –

RPATOTOHU



Referring to leaves which are fleshy, thick and juicy –

TCSCULENU



The pollen producing organ of a flower consisting of the filament and anther –

AETMNS



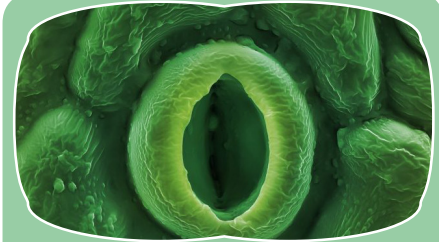
The seed producing organ of a flower consisting of the stigma, style and ovary –

LTPISI



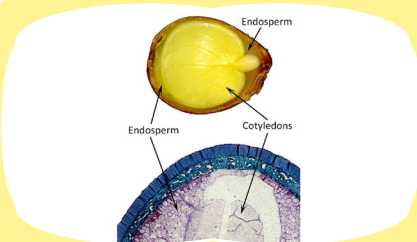
A fruit with a fleshy ovary wall and more than one seed, like a tomato –

YRRBE



Openings or pores in a leaf surfaces that permit gas exchange between the interior of the leaf and the atmosphere –

TAMSTOA



The nutritive substance within the embryo sac of the ovule, a food supply in which the embryo is embedded –

PEENSRMDO



A state of growth where the plant or seed appears to be totally inactive –

ORMNCYDA



The first leaf produced by the embryo of a germinating seed –

YLTEDONCO

B. Fill in the blanks to complete the given statements.

1. In Hindu planets are called..... .
2. The sun, moon, stars, planets, and other objects in the sky are known as
3. People who study the universe are called
4. The branch of science that deals with the study of celestial objects is called
5. The most important instrument used by the astronomers
6. There are about galaxies in the universe, containing an average of billion stars each.
7. A is the distance that light travels in one year.
8. All the stars in the constellation are supposed to form an image of Egyptian queen
9. Mercury is covered with many bowl shaped holes called
10. Our earth is the planet from the sun.
11. is commonly known as red planet.
12. A celestial object that revolves around a planet is known as
13. The ring of is made up of ice and dust.
14. The largest asteroid is km in diameter.
15. Meteor which falls from space on the earth surface is called

C. The different sources of energy add to the store of electrical power that is sent out to different locations via high powered lines. Identify these types of energies.



- ① It harvests the energy of the sun through collector panels to create conditions that can be turned into a kind of power



- ② By using large turbines to take available wind as the power and turn generator to produce electricity

- ③ High temperature are produced continuously inside the earth crust by the slow decay of radioactive particles. The steam then produced is captured to move turbines. The largest group of this plant is located at the Geysers in California



- ④ With the increased height of water level in the ocean, tides are produced which rush back and forth in the ocean. This energy is renewable source of energy and produce large energy



- ⑤ This energy is created through a specific nuclear reaction which is then collected and used as power generator. It is the renewable form of energy available to the world



- ⑥ Natural gas is becoming more common, but is used mostly for heating appliances. Oil is converted into many products, the most used is gasoline

