

BOOK
5

Date:

ROUND ABOUT

Worksheet - VII

Name: Class: Roll No:

A. Fill in the blanks to match the animal to its feature.

Pick-up point- Emu, Mare, Fish, Alligator, Dog, Butterfly

1. Scales determines the age of
2. produces bark and growl sound.
3. Female horse is also known as
4. The taste sense in is located in its feet.
5. The world's second largest bird is
6. The only creature having movable upper jaw

B. Some animals give birth to young ones and some lay eggs. Match the young ones of the given animals. Pair them below on the lines and write their names as shown.



.....

.....

.....

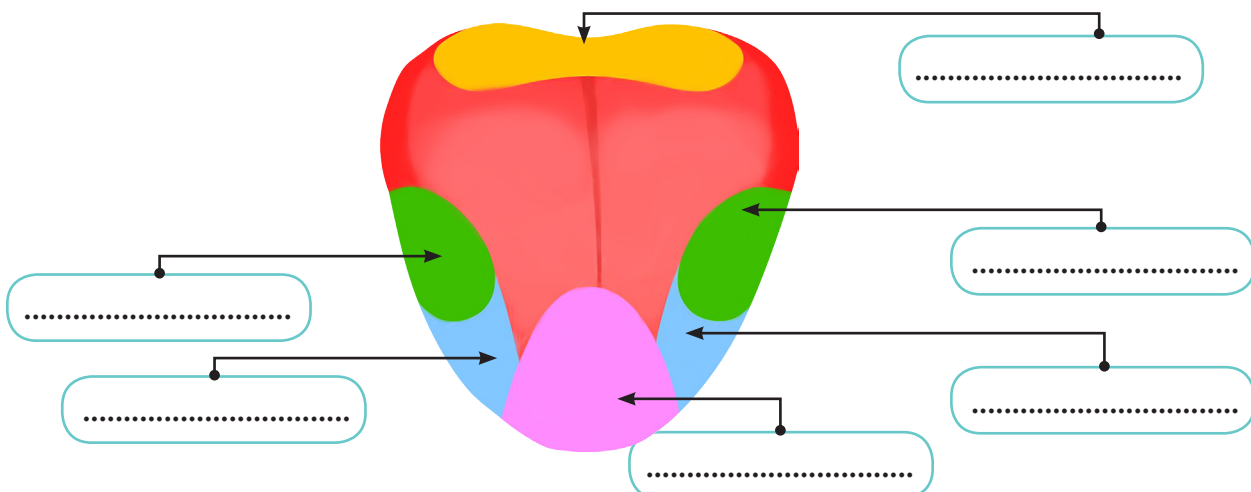
.....

.....

C. Find out the Amphibians and Arboreal animals from the grid.

Surrounding the grid are images of various animals: a snake (top left), a green tree frog (top middle), a salamander (top right), a parrot (top far right), a sloth (middle left), a koala (middle left), a monkey (bottom left), a panda (bottom middle), and a frog (bottom right).

D. What taste does the given part of your tongue identifies? Label in the below diagram.



E. Now identify the given foods according to their tastes.



Bitter

.....

.....

.....

.....

Sour

.....

.....

.....

.....

Salty

.....

.....

.....

.....

Sweet

.....

.....

.....

.....